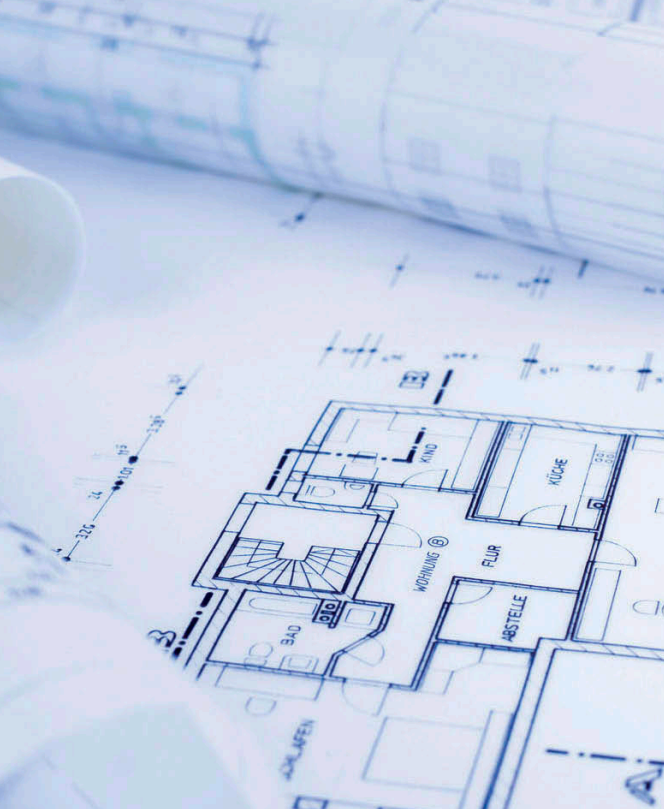


Rolla®

ROLLA INVEST INC.

Green Building Facades



DESIGN

MATERIAL DELIVERIES

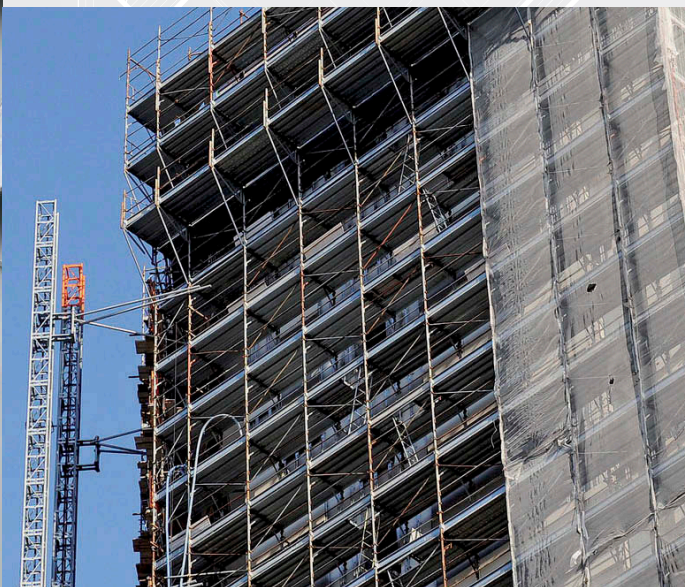


PREPARATION



SOLUTION

CONSTRUCTION



ASSESSMENT

INSTALLATION



THE COMPANY

The Hungarian ROLLA company group has been an active player of the domestic market of doors and windows for over 25 years.

In a joint effort the member companies offer to the customers a complete and mutually harmonized and supplementary package of products and services ranging from the designing, through preparation, assessment and material deliveries up to construction/installation.

Members and activities of the ROLLA company group:

- ROLLA INVEST Inc. – owner of the Holding
- ROLLA ART DESIGN OFFICE Ltd.
- NOVOFERM HUNGARY Ltd.
- WESTAG HUNGARY Ltd.

DISTRIBUTED BRANDS

SCHÜCO



JANSEN

WICONA®



The background of the page is a detailed architectural floor plan in a light gray tone. It features various rooms, corridors, and furniture layouts. Dimensions are marked with thin lines and numbers throughout the plan. Specific area labels include '24M²' in a large open space on the left, '18M²' in a circular room, and '10M²' in a smaller rectangular room. Other numerical values like '0605', '0011', '900', '1100', '2500', '600', '2620', '4525', '4120', '840', '1500', '940', '1500', '3450', '0019', '5090', '5600', '3700', '5400', and '0090' are scattered across the plan, indicating measurements in millimeters or centimeters. The plan also shows structural elements like walls, doors, and windows.

FACADE

In order to ensure the desired result, the staff of our company makes efforts to produce facades with the highest possible standards using the multitude of available materials as suited to the requirements of the customers, and in compliance with the relevant statutory regulations.

FIRST CLASS MATERIALS

Our objective is to fully meet the needs of our customers by using first class materials. The most important part of the related efforts include the carefully executed engineering and design works, that allow the provision of added value to the customers, by which the used base materials are formed into products, so that the customers could have ROLLA facades after eventually placing an order.

REFERENCES

The projects introduced hereby give a highlight about the professional activities of our company group. The projects were accomplished by the members acting as subcontractors or jointly with our retailer partners.

We are very proud to see that more and more modern buildings have our doors and windows installed, which satisfy both the contemporary engineering requirements and aesthetical challenges.

Our solutions keep on providing high performance solutions to the satisfaction of the users day by day all over the country in hospitals, health care institutions, hotels, attached buildings, housing estates, cultural, educational, recreational and sports facilities, office buildings, trading centres and industrial plants.

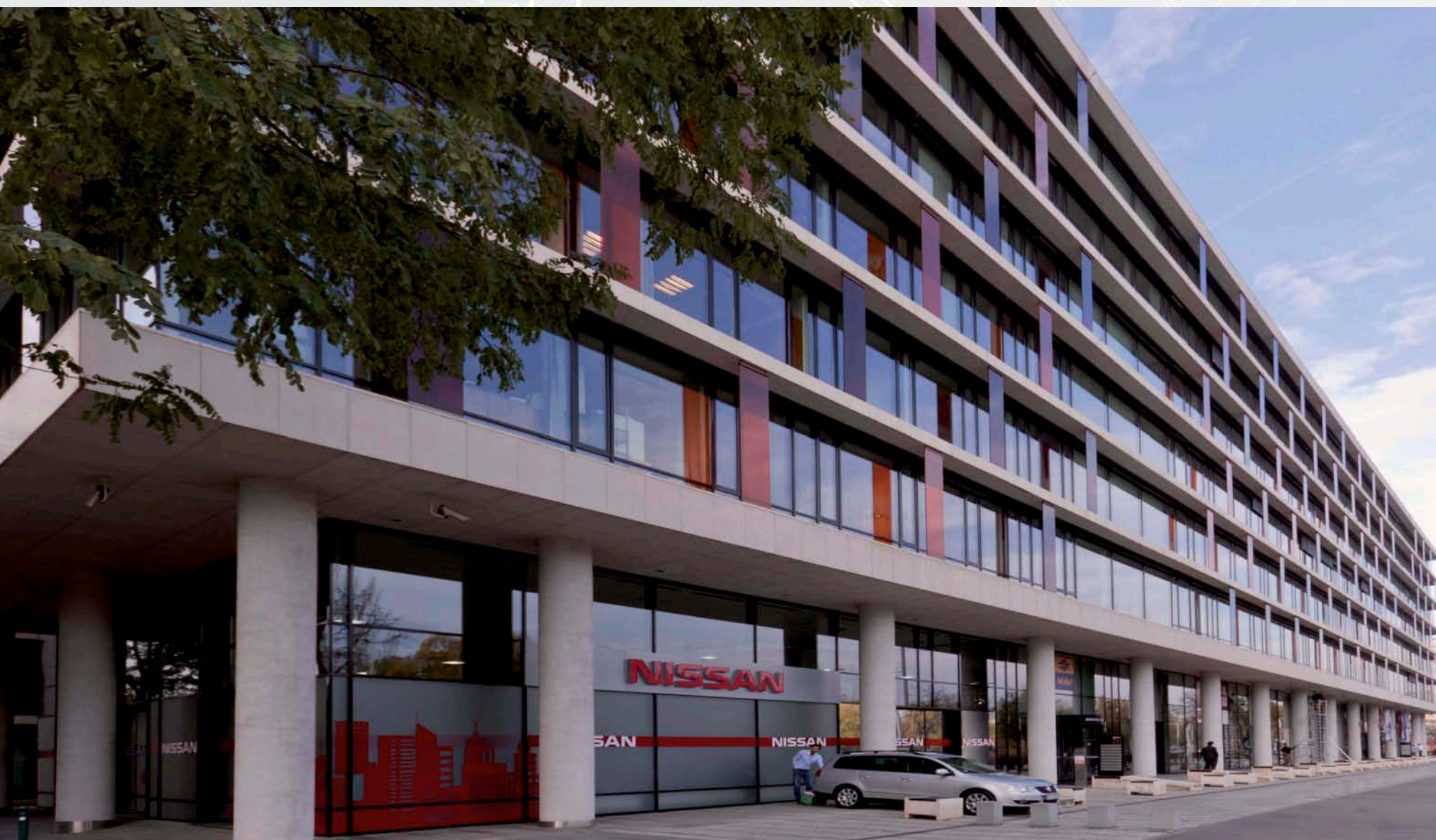


MARKET-HALL • CITY: SZEKSZÁRD • COUNTRY: HUNGARY, EU





PARKWAY OFFICE BUILDING • CITY: BUDAPEST • COUNTRY: HUNGARY, EU



Rolla®



KPMG OFFICE BUILDING • CITY: BUDAPEST • COUNTRY: HUNGARY, EU





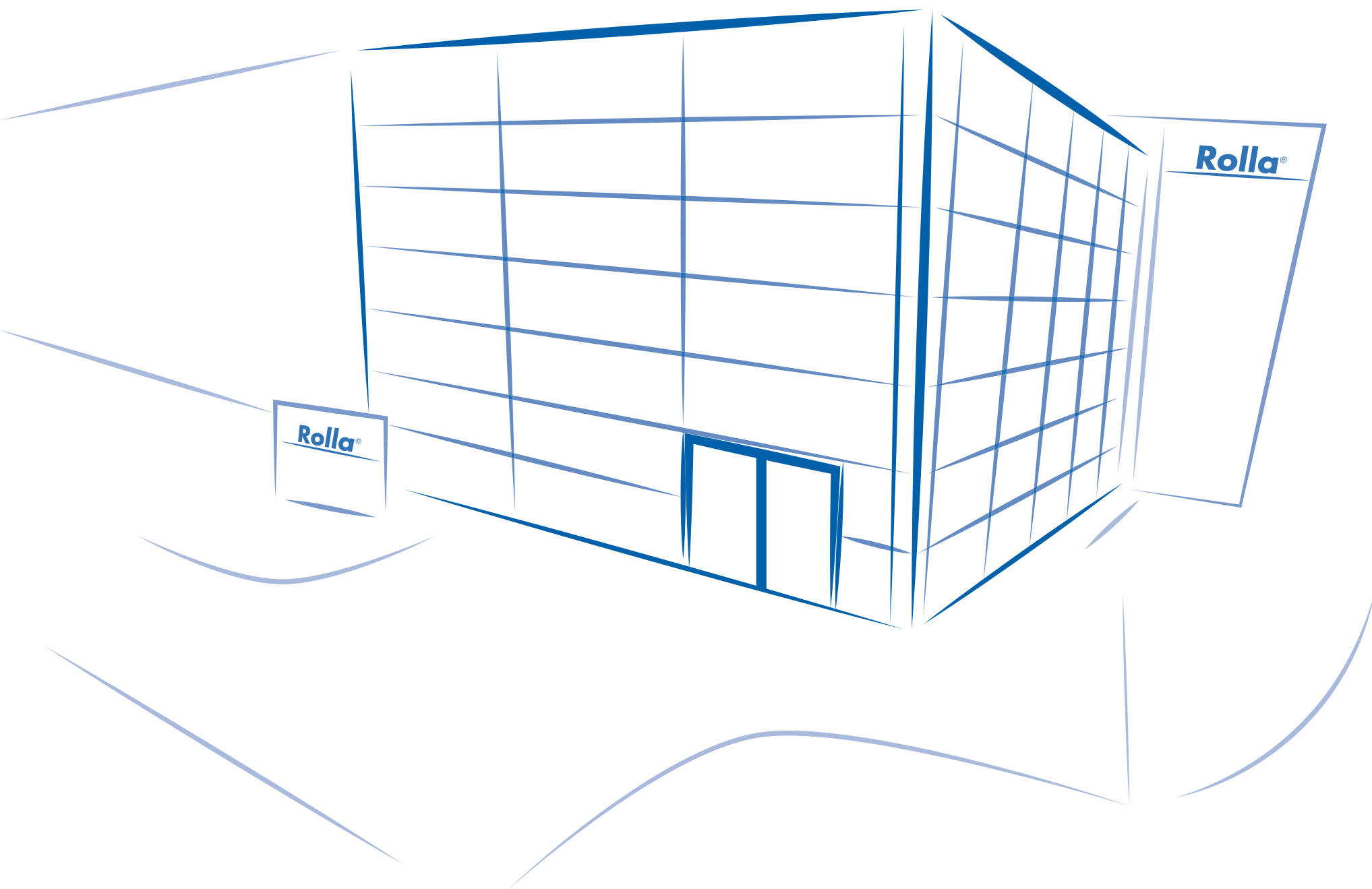
MTA Q2 • CITY: BUDAPEST • COUNTRY: HUNGARY, EU





NATIONAL INSTRUMENTS OFFICE BUILDING • CITY: DEBRECEN • COUNTRY: HUNGARY, EU





PLEASE FEEL FREE TO CONTACT US!

ROLLA INVEST INC.
HUNGARY, 2310
CITY: SZIGETSZENTMIKLÓS
STREET: PETŐFI SÁNDOR STR.137.
GPS: LAT: 47.36281, LON: 19.024919

PHONE: +36 24 887-250
FAX: +36 24 887-251
E-MAIL: ROLLA@ROLLA.HU
WEB: EN.ROLLA.HU